

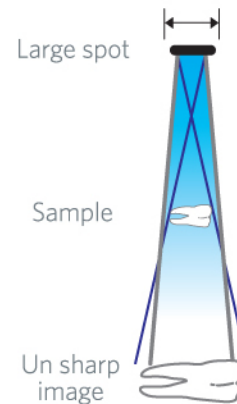
How to choose the best X-RAY device?

Focal Spot

Focal spot size is important factor to get a clear image in any X-ray.

By using Toshiba D-041 tube with smaller focal sport (0.4mm) and smaller divergence angle of the X-ray beams (12°) Rextar series provide the most sharp images.

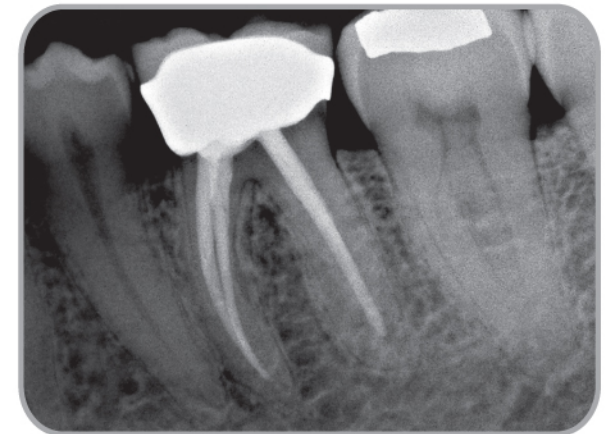
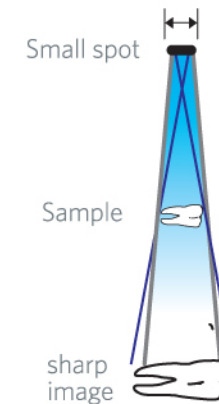
0.8mm Focal Spot



General Focal Spot

0.8mm

0.4mm Focal Spot



Rextar Series Focal Spot

0.4mm