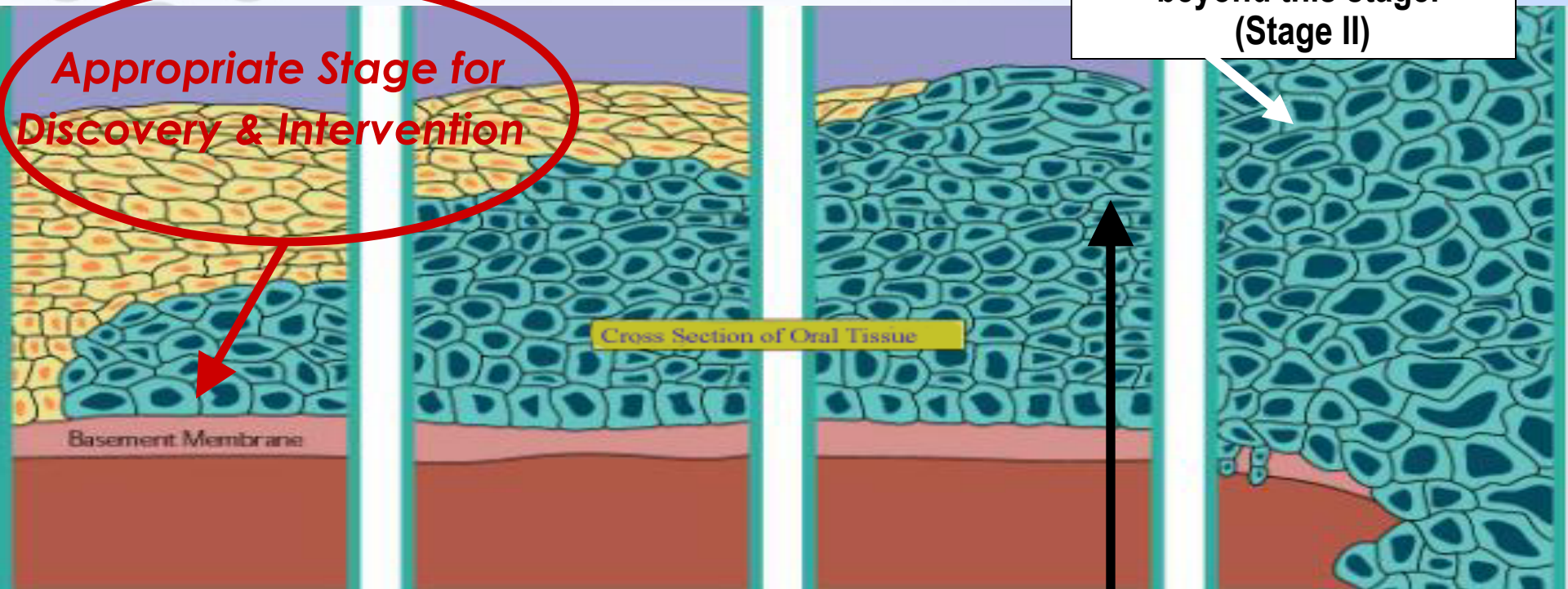


EARLY DETECTION IS THE KEY

67% of all oral cancer is currently discovered beyond this stage. (Stage II)

Appropriate Stage for Discovery & Intervention



Cross Section of Oral Tissue

Early Dysplasia

Moderate Dysplasia

Severe Dysplasia

Invasive Squamous Cell Carcinoma

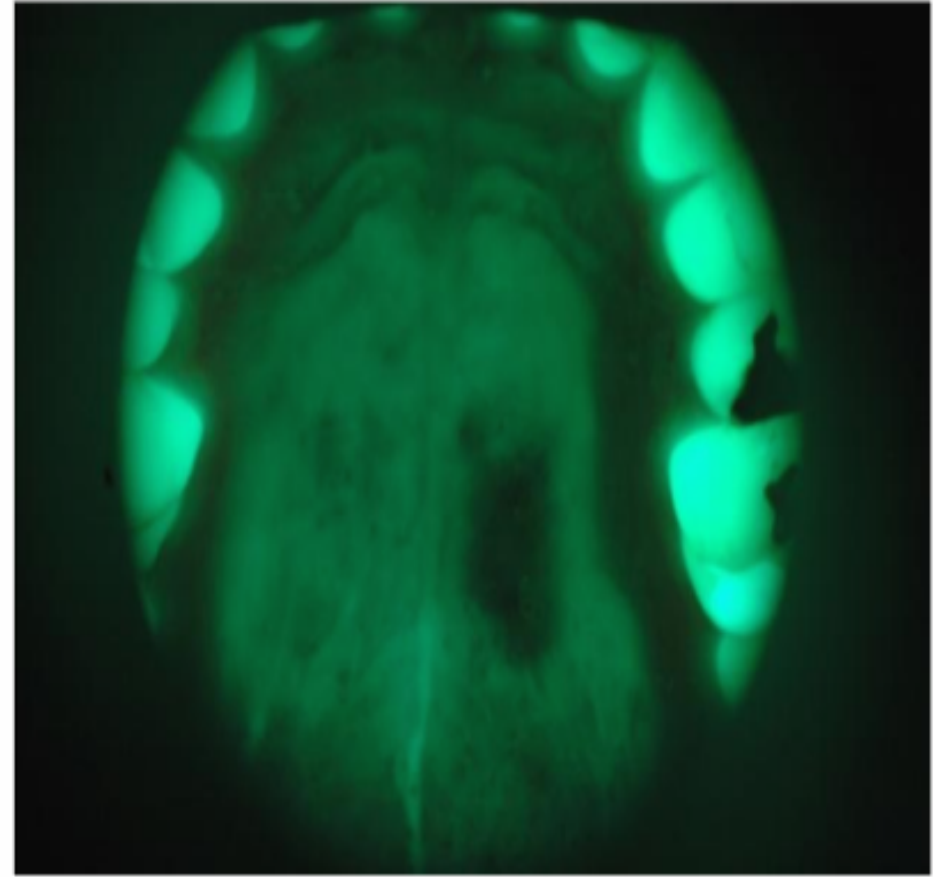
Potentially Malignant Disease Stages

←

→ Carcinoma-In-Situ (CIS)



Pre-Clinical Discovery



Left palate: low-grade muco-epidermoid carcinoma