

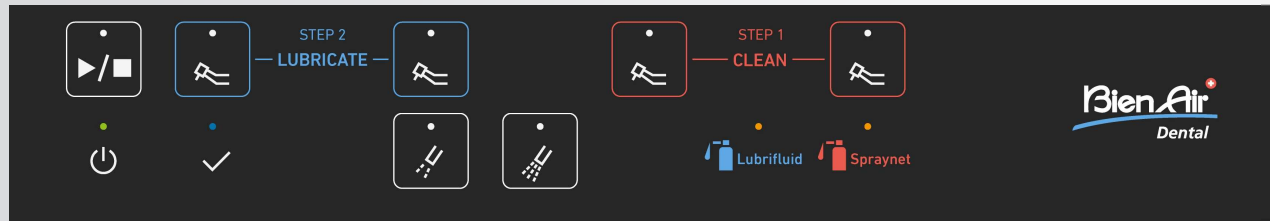
# Lubricare 2

Product Presentation

# NEW - Usability Improvement

## New Intuitive Switch Panel\*

User interface has been simplified to be more user friendly and avoid any potential mistake by the user in reprocessing instruments.



\*Introduced starting from SN 22F0001

### Improvements:

- Correct step order (STEP 1 CLEAN and STEP 2 LUBRICATE) has been specified.
- Color coding reminding the right product to use has been added on each lane activation button (RED for CLEAN i.e. SPRAYNET and BLUE for LUBRICATE i.e. LUBRIFLUID).

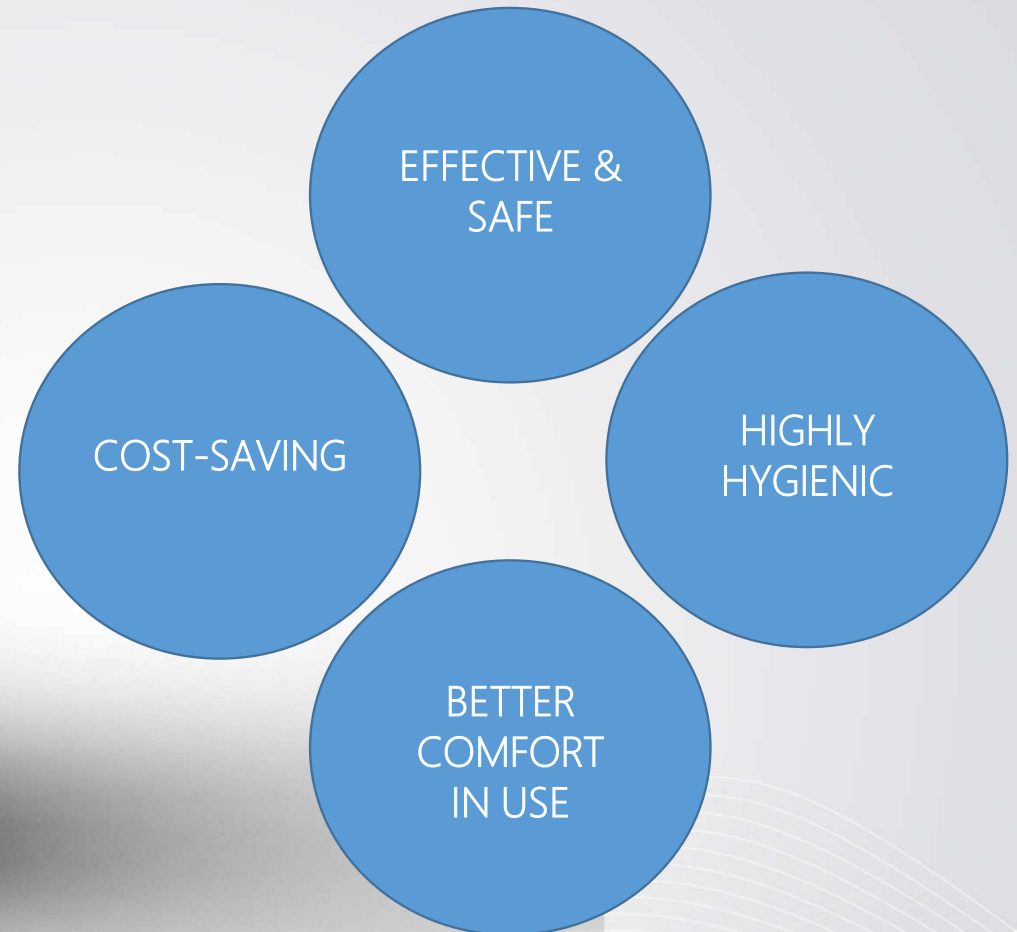


# Lubricare 2 At a Glance



- 4 ways: 2 cleaning, 2 lubrication; 1 lane for the chuck
- Duration: 20÷40 sec / cycle
- Manual changeover between cleaning & lubrication mode
- Duration: >400 cycles / bottle Lubrifluid & Spraynet
- Weight: approx. 8 kg
- Width 300 x Height 365 x Depth 300 mm
- Warranty: 24 months

# Unique Selling Proposition



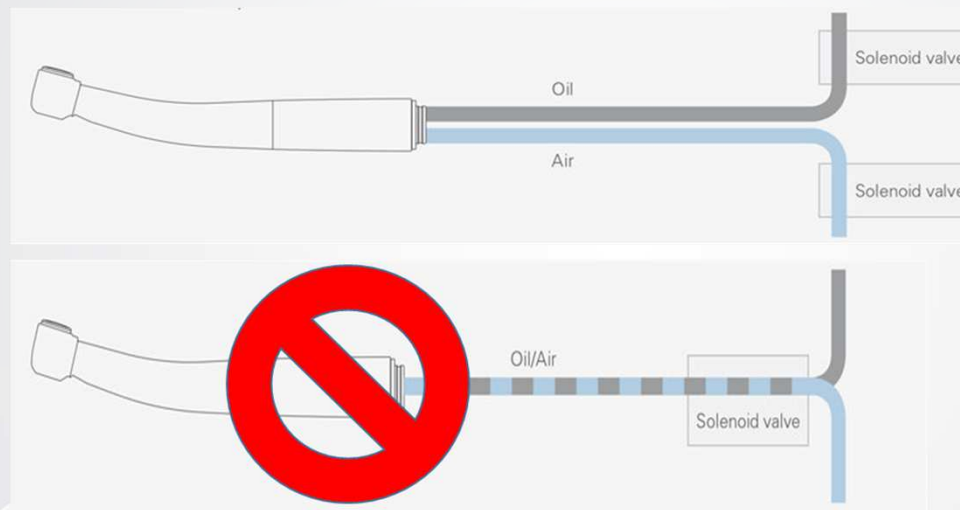
# USP – Effective & Safe

## Effective & Safe

Thanks to the **dual solenoid valves** system and a **dedicated clean air conduit**, the system can supply clean air without a mix of oil.

If autoclave sterilization is performed while a large amount of humidity is left inside the handpiece, steam will not infiltrate, and this could cause a sterilization defect.

On the contrary, during the water removal process between cleaning and lubrication, Lubricare 2 removes the residual water in the head, thus **maximizing lubrication results** and **minimizing the idling period** before a safe reuse of the handpiece.



# USP – Cost-Saving

## Cost-saving

Compared to manual lubrication, Lubricare 2 prolongs the life of a bottle of Lubrifluid by more than **4 times** (approx. 400 cycles vs 80 cycles).



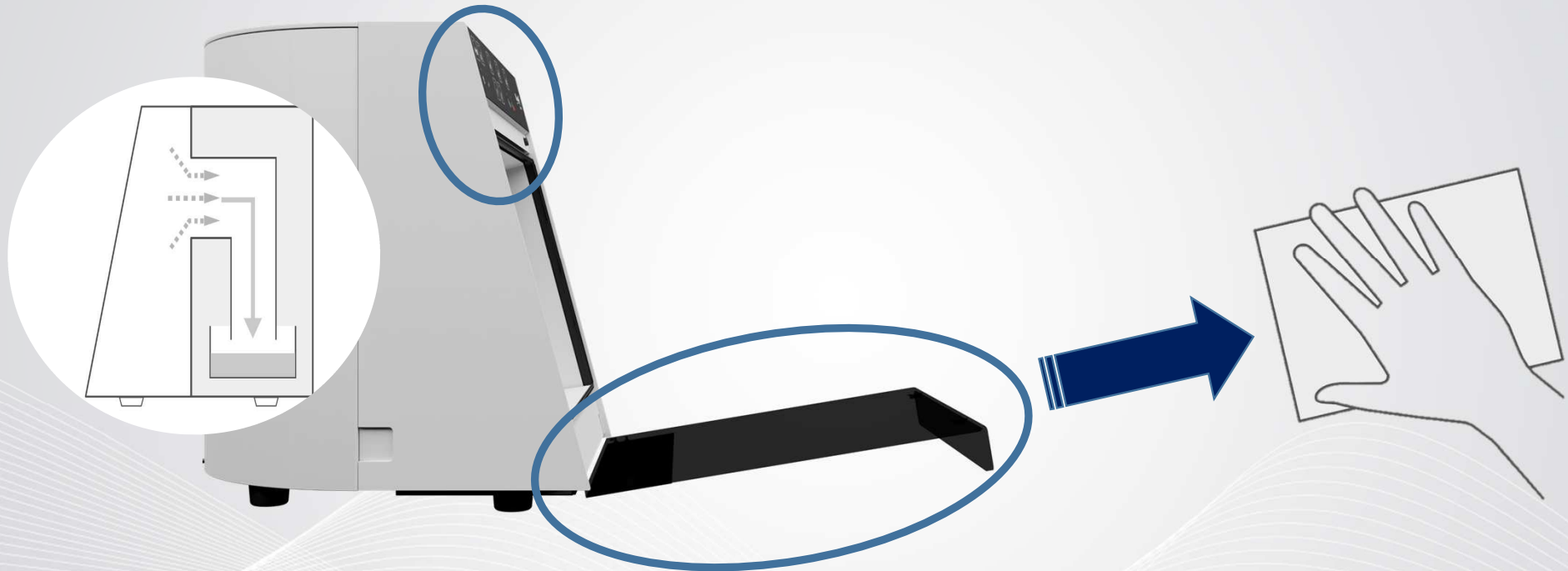
VS



# USP – Highly Hygienic

## Highly Hygienic

Lubricare 2 incorporates a built-in oil mist suction mechanism to **prevent aerosol diffusion** when in use. Moreover, the control panel is completely flat for **easy cleaning**, and the flat front door can be removed for improved access.



# USP – Better Comfort in Use

## Better Comfort in Use

Lubricare 2 is -2kg less heavy and -15 dB less noisy than Lubricare 1, thus dramatically enhancing comfort for the user. Simplified switch control interface for enhanced and intuitive usability.



# Product Configuration

NOTE: Lubricare 2 is delivered by default with couplings only for electric handpieces (see also next slides).



1601156-001 Lubricare 2		
Ref.	Description	Qty
1601156	Lubricare 2** device	1
1300065-001	3-pole network cable type 12 CH	1
2100395	IFU Lubricare 2_English	1
**including 4 electric couplings & cable USA medical grade		

# Bien-Air Couplings



## Ref 1308451-001 : ELECTRIC COUPLING

Lubricare 2 is provided by default with **4 electric couplings**. These couplings are compatible with Bien-Air long and micro-series contrangles as well as with straight handpieces.



Lubricare 1 electric coupling are **NOT COMPATIBLE** with Lubricare 2 device (for more details see next slide).



## Ref 1600082-001 : UNIFIX AIR COUPLING



Unifix couplings are **NOT included** by default in the Lubricare 2 box. They will remain available as spare parts, but just on demand i.e. they **must be ordered separately**, according to the official Price List.

# Other Available Couplings

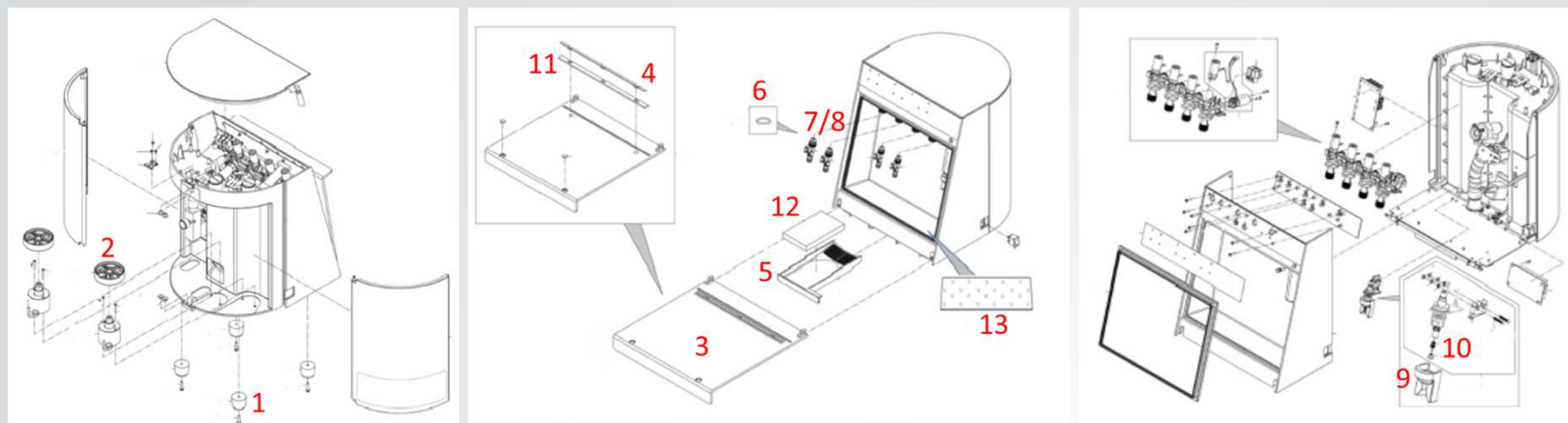


Lubricare 1 couplings (air and electric) **ARE NOT COMPATIBLE** with Lubricare 2.  
They can fit on the machine **BUT** may cause malfunctioning of the device thus leading to handpiece shorter service life.

The table below summarizes alternative couplings available for Lubricare 2:

Ref Bien-Air	Description
1308699-001	Lubrina Kavo coupling (air turbines)
1308701-001	Lubrina W&H coupling (air turbines)
1308700-001	Lubrina Sirona coupling (air turbines)

# Spare Parts List



No.	Ref Bien-Air	Description
<b>REPLACEMENT PARTS</b>		
1	1308443-001	Rubber Foot
2	1308444-001	Lubricare 2 Spray Stand
3	1308445-001	Lubricare 2 Front Door (with hinge)
4	1308447-001	Lubricare 2 Front Door Sheet Stopper
5	1308448-001	Oil Absorbent Pad Tray
6	1308450-001	LS-coupling O-ring Set
7	1308451-001	LS coupling
8	1600082-001	Unifix coupling*
9	1308453-001	Nozzle guide
10	1306174-001	Lubrina Nozzle Skirt

No.	Ref Bien-Air	Description
<b>CONSUMABLES</b>		
11	1308446-005	Door Oil Absorbing sheet (5pcs.)
12	1306003-005	Oil Absorbent Pad (5pcs.)
13	1308452-005	Oil Absorbent sheet (5pcs.)
<b>*OPTIONAL</b>		
8	1308699-001	Lubrina Kavo coupling (air turbines)
8	1308701-001	Lubrina W&H coupling (air turbines)
8	1308700-001	Lubrina Sirona coupling (air turbines)

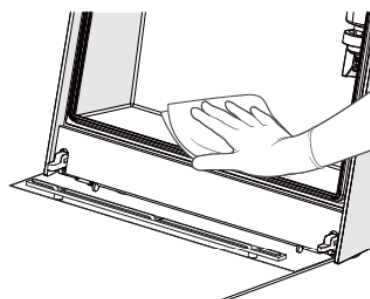
For detailed price please refer to the Official Price List

Lubricare 2 accepts also handpieces and maintenance products from other manufacturers. Additional couplings and spray holder may be needed to use products not supplied by Bien-Air.

## 8.1 Daily Cleaning

\* Reinstall all parts after cleaning.

### 8.1.1 Main Unit



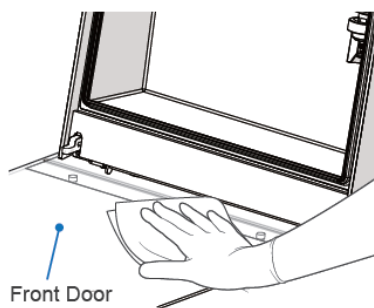
1. Remove the oil absorbent sheet, wipe off any remaining oil, and wipe off the unit with ethanol (70 vol% to 80 vol%).

☞ p. 20 "6.4 Oil Absorbent Sheet"

! Do not use disinfectants that contain chlorine-based cleaners or benzalkonium chlorinated aromatics. These solutions could discolor or damage plastic and corrode metal.

! Be sure to use a soft cloth, such as gauze, to wipe off the unit. Otherwise, the unit surface will get scratched.

\* If there is dirt that is hard to remove, use a soft cloth with water and a little neutral detergent.

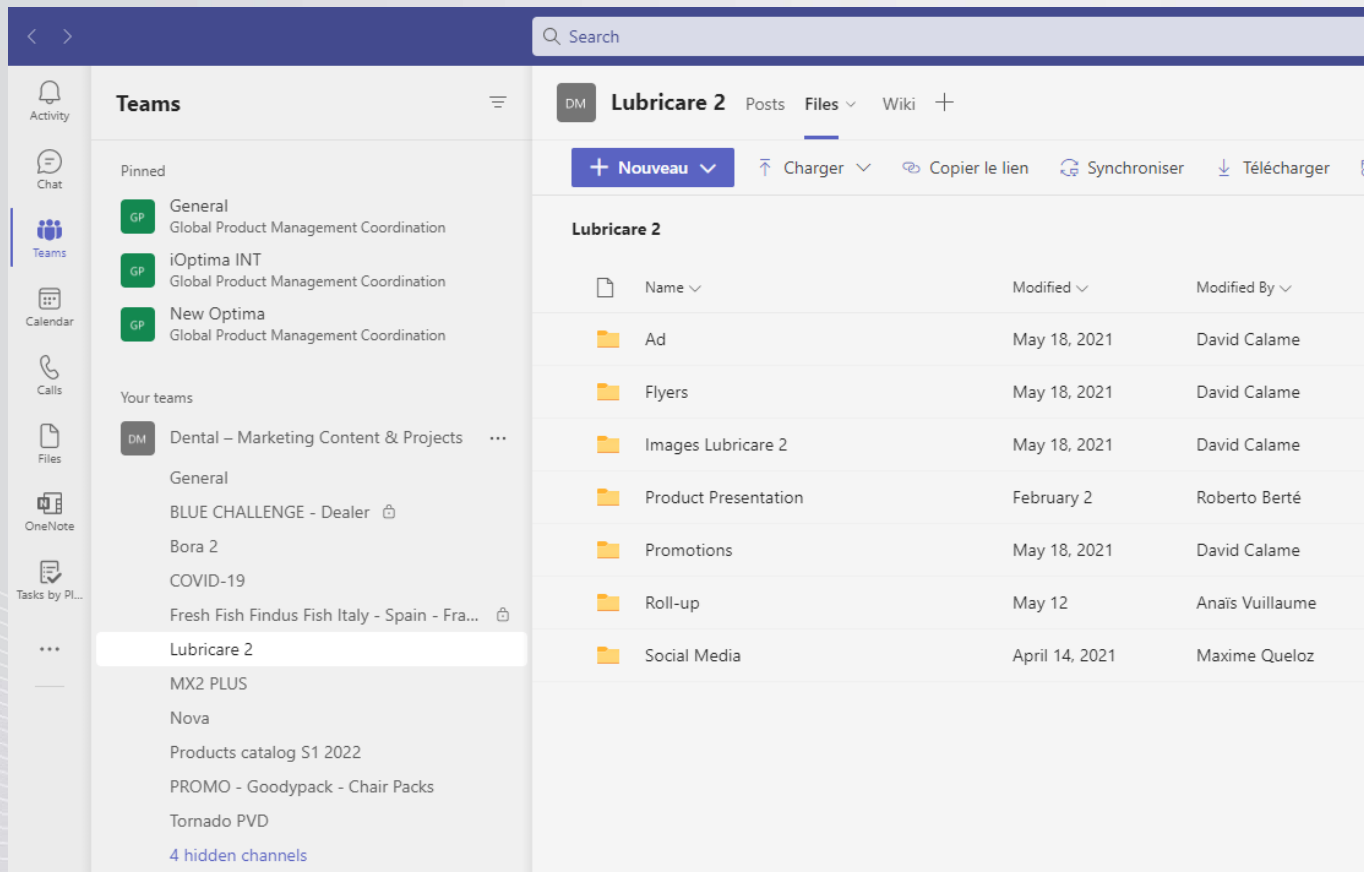


2. Remove the door oil absorbent sheet and front door sheet stopper, and clean the inside of the front door in the same way as the unit surface.

☞ p. 21 "6.6 Door Oil Absorbent Sheet and Front Door Sheet Stopper"

! Clean the front door regularly. Note that lack of cleaning will result in oil overflowing and contaminating the installation area.

# Marketing Collaterals



The screenshot shows the Microsoft Teams interface. On the left, the 'Teams' list is visible, with 'Lubricare 2' selected. The main area displays the 'Files' tab for the 'Lubricare 2' team. At the top, there are action buttons: '+ Nouveau', 'Charger', 'Copier le lien', 'Synchroniser', and 'Télécharger'. Below this is a table of files and folders.

Name	Modified	Modified By
Ad	May 18, 2021	David Calame
Flyers	May 18, 2021	David Calame
Images Lubricare 2	May 18, 2021	David Calame
Product Presentation	February 2	Roberto Berté
Promotions	May 18, 2021	David Calame
Roll-up	May 12	Anaïs Vuillaume
Social Media	April 14, 2021	Maxime Queloz

Available on Teams:

*[Teams -> Your Teams -> Lubricare 2 -> Files]*

ADVERTISING

FLYERS

IMAGES

PRODUCT PRESENTATION (English)

PROMOTIONS

ROLL-UP

SOCIAL MEDIA

# Marketing Collaterals



Home / Support & Downloads / Download Center

**DOWNLOAD PDF OPERATING INSTRUCTIONS**

Please choose your categories or type in search field:  ex: Product category, Product, Language

Document type	Product category	Language
All (2)	Contra-Angle	All (36)
Installation	Handpiece	MULTI
Instruction	Prophylaxis	German
	Cable	English
	Laboratory Controls	Spanish
	Implantology System	French
	Motor Controllers	Italian
	<b>Maintenance products</b>	JA
	Set	Russian
	MICROSAW	Portuguese

REF	Product type	Name	Document type	Language	
2100281	Maintenance produ...	LUBRICARE	Instruction	English	pdf
2100395	Maintenance produ...	Lubricare-2-NOTIC...	Instruction	Chinese	pdf
2100395	Maintenance produ...	Lubricare-2-NOTIC...	Instruction	German	pdf
2100395	Maintenance produ...	Lubricare-2-NOTIC...	Instruction	English	pdf
2100395	Maintenance produ...	Lubricare-2-NOTIC...	Instruction	Spanish	pdf
2100395	Maintenance produ...	Lubricare-2-NOTIC...	Instruction	French	pdf
2100395	Maintenance produ...	Lubricare-2-NOTIC...	Instruction	Italian	pdf
2100395	Maintenance produ...	Lubricare-2-NOTIC...	Instruction	Polish	pdf
2100395	Maintenance produ...	Lubricare-2-NOTIC...	Instruction	Russian	pdf
2100395	Maintenance produ...	Lubricare-2	Instruction	Chinese	pdf

Home / Products

**PRODUCTS**

- TURBINES
- CONTRA-ANGLES & STRAIGHT HANDPIECES
- MICROMOTORS & MOTOR CONTROLLERS
- ORAL SURGERY & IMPLANTOLOGY
- LABORATORY CONTROLS
- MAINTENANCE

Available on the web site:

WEB PAGE WITH USP

TECHNICAL DATA

USER MANUALS

(Multiple languages)

QUICK REFERENCE GUIDE

(Multiple languages)

SWISS MADE