

# How to choose the best X-RAY device?

REXTAR-X    REXTAR EXO1414    REXTAR LCD

## Tube

### Voltage

Tube voltage is the power of penetrating the bone.

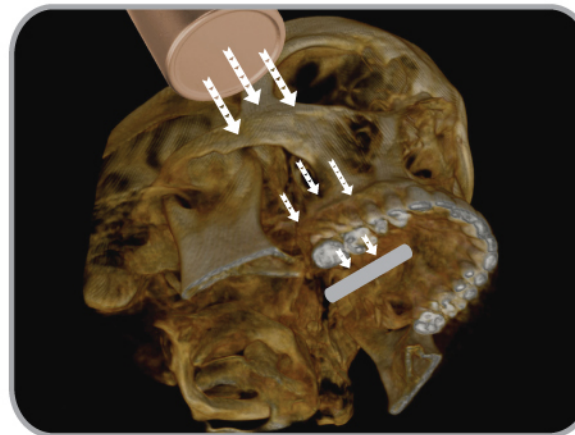
In the case of posterior area, 60Kv could be the reason to cause the unclear image as the tube power is not enough through.

### Current

Current is a flow of electric charge which means the quantity.

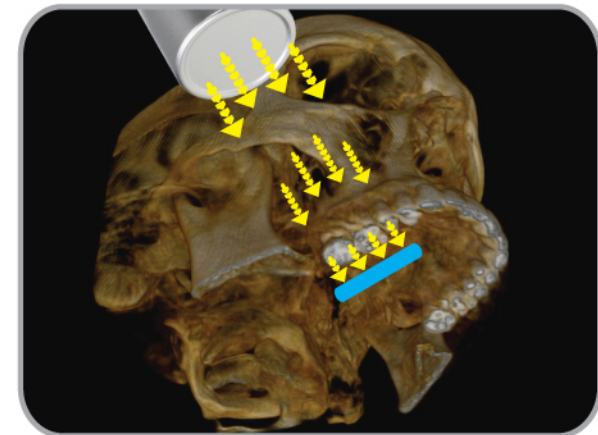
In order to get a clear image, the power and current of tube is important factor.

With easy penetration to cheekbone, our best tube power and current makes sharpest images of the superior maxilla.



General Voltage/Current

60Kv / 1~2mA



Rextar Series Voltage/Current

70Kv / 2mA